

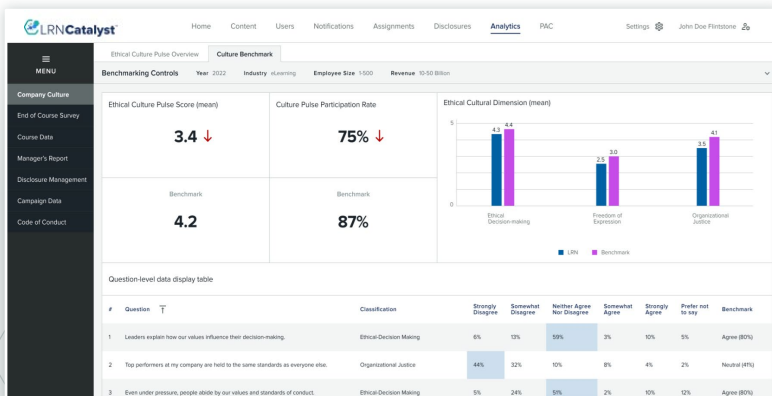
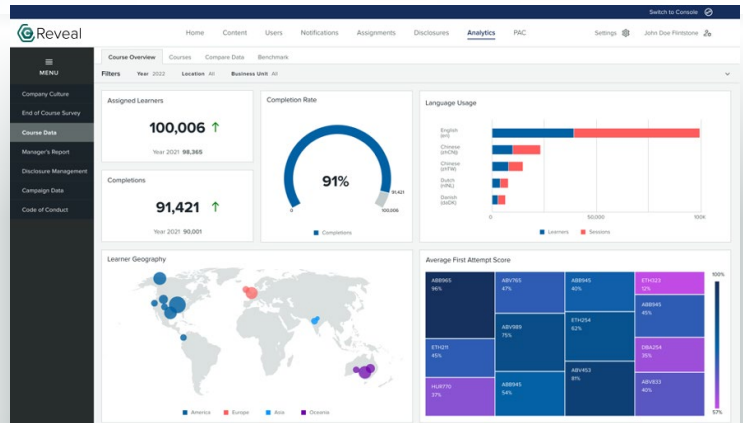


To power compliance programme growth, you need more than completion data.

Catalyst Reveal provides real-time visibility into your programme's performance, powered by learner activity, artificial intelligence and market benchmarks. Clear KPI dashboards make insights actionable so you can understand and defend your programme, all while reducing organisational risk and improving company culture.

Understand programme impact

Quickly understand and advance your programme with a single source of truth for compliance reporting and analytics. Our powerful visualisations and flexible dashboards provide a clear view into programme performance and surface actionable insights.



Benchmark your success

Put your programme's performance into context with benchmarks from companies around the world. This insight into curricula, learner outcomes and culture allows you to confidently set your standards and measure success.

Data that delivers

Tell a story ready for your data

Deliver a data-backed view of programme performance with immediate insights into programme standing, progress and contextual benchmarks.

Improve company culture.

Gain insights into employee experience in real-time and make leadership-level decisions that are in line with expectations. Stop relying on anecdotal or outdated feedback and uncover hidden insights with sentiment analysis.



Key features:

- Visualisations display data intuitively and eliminate the need to manipulate them manually
- Detailed information on course, culture and learner feedback data
- Filter options to refine data
- KPIs to track and identify E&C programme trends
- Data export into CSV or Excel formats
- Course data for comparison across segments like year, business unit and much more
- Automated reports
- Market benchmarking across data sets
- Course sentiment based on feedback from user population available in real time

